

# What's On



Your destination for inspiration, imagination & information

Port Hope Public Library - Over 110 Years of Library Service

April 2025

*"It was a bright cold day in April, and the clocks were striking thirteen."*

- George Orwell, 1984

## Library Hours

### Mary J. Benson Branch

#### Monday - Thursday

10 am - 8 pm

#### Friday

10 am - 5 pm

#### Saturday

10 am - 5 pm

#### Sunday

11 am - 2 pm

### The Port Hope

### Community Hub Branch

## PLEASE NOTE

The Hub Branch  
in Canton is closed  
for building  
renovations.  
Tentative  
re-opening is  
May 5, 2025.



## Homeschool Group

**Tuesday, April 1, 1 PM @ MJB Branch**

If you're a homeschooling family don't miss our monthly events! This month we'll be working on an art project with Piet Mondrian.



## Toddlers & Waddlers - Drop In

**Wednesdays, April 2, 9, 16, 23, 30 10:30 AM @ MJB Branch**

Stories, singing & interactive play designed for children under 6. All children are welcome!



## Bibliotherapy with NHH Mental Health

**Fridays, April 4 & 11, 11 AM @ MJB Branch**

Join us weekly to explore a new theme through literature. We'll discuss topics like resilience, hope, wellness and courage, and connect with others on a shared journey of growth and reflection.



## Mandarin Lessons

**Saturdays, April 5, 12, 19, 26 10:30 AM @ MJB Branch**

Drop in to learn Mandarin with Globe Cambridge High School student Margaret Ma!



## Writing Workshop with Ed Greenwood!

**Saturday, April 5 11:30 AM - 4 PM @ MJB Branch**

Discover the secrets of storytelling from PHPL's own writer, Ed Greenwood! Hone your writing skills and gain valuable insights into the craft. Adults only. Pre-register at [registrations@phpl.ca](mailto:registrations@phpl.ca)



## Scrabble Sundays at MJB!

**Sundays, April 6, 13, 27 11:30 - 1 PM @ MJB Branch**

Come out to play scrabble and meet up with friends old and new.



## Baby Time at MJB!

**Mondays, April 7, 14, 28 10:30 AM @ MJB Branch**

Drop in for a special baby time program of songs, stories & bubbles for babies ages 1 and under!

### Please Note:

The library will be closed on **April 18 for Good Friday & April 20 & 21 for Easter weekend**. Take advantage of our online resources like Libby & Hoopla, and visit [www.porthopepubliclibrary.ca](http://www.porthopepubliclibrary.ca) for more!

## In This Issue

- ◆ Bibliotherapy
- ◆ Techno Buddies
- ◆ Decoupage Crafternoon
- ◆ Baby Time
- ◆ Eco Day Craft
- ◆ Lunch & Learn
- ◆ Teen Trivia

# Events & Programs @ Your Library



## Unfinished Stitchery

**Monday, April 7, 14, 28 2 - 3:30 PM @ MJB Branch**

Bring your unfinished knitting, crocheting, rug hooking or any similar project and work among others for a fun and social gathering.



## Drop In Chess Club

**Monday, April 7, 14, 28 6 - 8 PM @ MJB Branch**

We're hosting a chess club for experienced players. Drop in with a friend or meet an opponent here! For adults and kids 11+.



## Lunch and Learn at PHPL!

**Tuesday, April 8 (and May 13 & June 10) 11:30 AM @ MJB**

Bring your lunch and an appetite for learning to PHPL for Lunch & Learn, in partnership with the Port Hope Chamber of Commerce! This month **Ontario Power Generation** will be here to talk about "Powering Possibilities at Wesleyville". Chamber members and non-members are welcome. Pre-register at [www.business.porthopechamber.com/events](http://www.business.porthopechamber.com/events).



## Techno Buddies Afternoons

**Tuesdays, April 8, 15, 22, 29 4:15 - 5:15 PM @ MJB Branch**

Do you need technical help with your devices? TCS student volunteers are here to help. Drop in with your devices and your questions.



## Drop In Family Craft Night at MJB!

**Tuesday, April 8 5:30 - 7 PM @ MJB Branch**

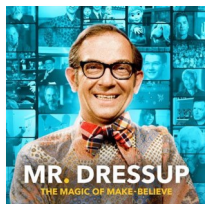
Bring the family to make a fun bunny craft! Drop in. No registration required.



## Let's Go Lego! PA Day Drop In

**Friday, April 11, 1 - 4 PM @ MJB Branch**

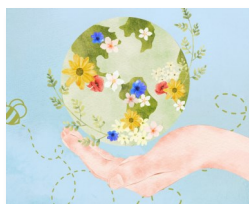
Come join your friends and create something epic with our extensive LEGO collection!



## National Canadian Film Day: Mr. Dressup Movie!

**Wednesday, April 16 6 PM @ The MJB Branch**

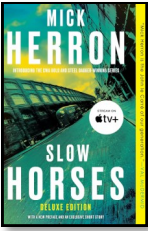
Join us for an evening of make-believe with Mr. Dressup as we celebrate a national one-day celebration of Canadian cinema. This year's theme is Something to Believe In.



## Earth Day Eco Craft

**Tuesday, April 22 5:30 - 7 PM @ The MJB Branch**

Drop in to make a pollinator seed pod to celebrate Earth Day! You'll be able to take it home to plant, and attract bees and butterflies to your yard this summer! Pre-register at [registrations@phpl.ca](mailto:registrations@phpl.ca)



## Library Book Club

**Wednesday, April 23 7 PM @ MJB Branch**

This month's selection is *Slow Horses* by Mick Herron. "A funny, stylish, satirical, gripping story. . . Memorably seedy characters, sharp dialogue, complex plot. I'm hooked." - The Guardian



## Teen Trivia

**Thursday, April 24 6:30 PM @ MJB Branch**

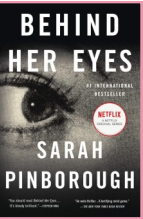
Bring your friends to test your knowledge and compete in Teen Trivia!



## Decoupage Crafternoon & Tea

**Wednesday, April 26 2:30 PM @ MJB Branch**

Join local author and artist, Signe Langford for a creative Crafternoon Tea, where we'll make unique oyster shell trinket dishes with decoupage and drawing. All materials are supplied! Light refreshments will be served. Pre-register at [registrations@phpl.ca](mailto:registrations@phpl.ca).



## Mystery Readers' Book Club

**Wednesday, April 30 7 PM @ MJB Branch**

This month we're discussing *Behind Her Eyes* by Sarah Pinborough. "You should read *Behind Her Eyes*...It's bloody brilliant." —Stephen King



## Upcoming Book Sale at The Hub Branch!

**Saturday, May 24 @ Hub Branch**

Save the date for our upcoming book sale! Do you have books to donate for the sale? Please call us at 905-885-4712 to arrange your donation, as the Hub is temporarily closed.

**Follow Us On Our Facebook Page!**



Stay Connected  
@PortHopeLibrary




## Follow PHPL's Social Pages!

Want to see what we're up to through the month? Follow us on Facebook and Instagram! We post event info and updates, plus fun around-the-library pics!



## Contact Us

**Mary J. Benson Branch**

31 Queen Street  
Port Hope, ON L1A 2Y8  
(905) 885-4712

**The Hub**

5325 County Road 10  
Port Hope, ON L1A 3V5  
(Canton)  
(905) 753-0031

[library@phpl.ca](mailto:library@phpl.ca)

Visit us on the web at  
[www.porthopepubliclibrary.ca](http://www.porthopepubliclibrary.ca)

## Artists on View:

Drop into the Mary J. Benson Branch to view the artwork of Port Hope High School students through April.



@PortHopeLibrary



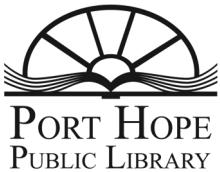
port\_hope\_library



porthopepubliclibrary



PHPL Reading Music:  
PHPL31



## PHPL Mission Statement

Port Hope Public Library delivers quality, community focused library services with a commitment to equitable and open access to all resources.

Your destination for inspiration, imagination and information



# April

**Family**

**Children**

**Teen**

**Adult**

**R:**  
Register for program by email at [registrations@phpl.ca](mailto:registrations@phpl.ca)

**Lunch & Learn**  
\*Register online at PH Chamber of Commerce

	SUN	MON	TUE	WED	THU	FRI	SAT
	<b>National Volunteer Week</b> April 21 -27		<b>1</b> Homeschool Group 2 pm	<b>2</b> Toddlers & Waddlers 10:30 am	<b>3</b>	<b>4</b>  Bibliotherapy 11 am	<b>5</b> Mandarin 10:30 am  Tell Your Story with Ed Greenwood 11:30 am <b>(R)</b>
	<b>6</b> Scrabble 11:30 am	<b>7</b> Baby Time 10:30 am  Unfinished Stitchery 2 pm  Chess Club 6 - 8 pm	<b>8</b> Lunch & Learn 11:30 am <b>(R)*</b>  Techno Buddies 4:15 - 5:15 pm  Craft Night 5:30 - 7 pm	<b>9</b> Toddlers & Waddlers 10:30 am	<b>10</b>	<b>11</b>  Bibliotherapy 11 am  Let's Go Lego 1-4 pm	<b>12</b> Mandarin 10:30 am
	<b>13</b> Scrabble 11:30 am	<b>14</b> Baby Time 10:30 am  Unfinished Stitchery 2 pm  Chess Club 6 - 8 pm	<b>15</b> Techno Buddies 4:15 - 5:15 pm	<b>16</b> Toddlers & Waddlers 10:30 am  Mr. Dressup Movie 6 pm	<b>17</b>	<b>18</b> <b>Closed</b> Good Friday	<b>19</b> Mandarin 11:30 am
	<b>20</b>  <b>Closed</b>	<b>21</b> <b>Closed</b> Easter Monday	<b>22</b> Techno Buddies 4:15 - 5:15 pm  Earth Day Craft 5:30 - 7 pm <b>(R)</b>	<b>23</b> Toddlers & Waddlers 10:30 am  Library Book Club 7 pm	<b>24</b> Teen Trivia 6:30 - 7:30 pm	<b>25</b>	<b>26</b> Mandarin 10:30 am  Decoupage Crafternoon Adults, kids 12+ 2:30 pm <b>(R)</b>
	<b>27</b> Scrabble 11:30 am	<b>28</b> Baby Time 10:30 am  Unfinished Stitchery 2 pm  Chess Club 6 - 8 pm	<b>29</b> Techno Buddies 4:15 - 5:15 pm	<b>30</b> Toddlers & Waddlers 10:30 am  Mystery Book Club 7 pm			